

x PRO 1

Product Sheet - USM x PRO 1

Designed to incorporate our PRO 1 System, the USM modular furniture fits into any home or office environment.

Durability, functionality and aesthetics are combined.

USM OPTIONS

3 CONFIGURATIONS
(cf. annex)

14 COLORS



PRO 1 OPTIONS



2 COLORS



A customised piece of furniture with a wide choice of colours and several possible configurations

PRO 1 INFORMATION

TAP

WATER	Filtered fresh, still and sparkling	 Still water	 Sparkling water
FINISH	All black and stainless steel over black base		
DIMENSIONS	↔16 ↑41,6 ↑32 cm		
SERVICE HEIGHTS	↑28,5		
HOLE SPECS	↔14,5 ↑31		

FILTER

ULTRAFILTRATION TECHNOLOGY	<p>3 Step filtration</p> <ul style="list-style-type: none">• Removes coarse particles• Chlorine and organic substances are removed• Filtration of fine particles and remaining solids <p>Ultrafiltration with up to 99.9999% protection from particles and bacteria</p>
-------------------------------	---

BOX

OPTIONS	Standard 80 l/h
SETTINGS	Temperature and gas intensity control
DIMENSIONS	↔33,3 ↑36,2 ↑37 cm
WEIGHT	26 kg
MAX. ENERGY	570 W

PRODUCT OPTIONS

PRO 1 - BLACK	BWS-0001 / BE BOX A (80L)
PRO 1 - STEEL	BWS-0002 / BE BOX A (80L)

SERVICE & MAINTENANCE

ALL INCLUDED	Complete coverage of hygiene, safety, filter replacement and gas cylinder change (CO2), maintenance and lifetime warranty. 100% recycled consumables.
--------------	---

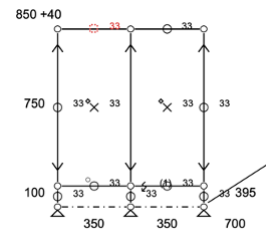
CONFIGURATION

Designed to incorporate BE WTR system (PRO 1, filter, gas and cooling unit)

CONFIGURATION 1

LOW MODEL
FRAME, BACKDROP PANELS AND LIGHTS

Dimensions: L700 x D395 x H890

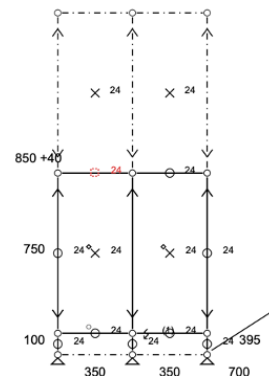
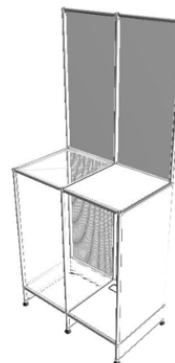


USM Ref : USM Meuble 700x395/890

CONFIGURATION 2

MODEL WITH BACK
BACKDROP PANELS

Dimensions: L700 x D395 x H1640

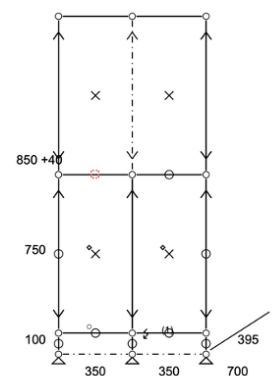


USM Ref : USM Meuble 700x395/1640

CONFIGURATION 3

FULL MODULE
FRAME, BACKDROP PANELS AND LIGHTS

Dimensions: L700 x D395 x H1640



USM Ref : USM Meuble 700x395/1640 Haller-E